



PORT OF EVERETT SOUTH TERMINAL WHARF AND ELECTRICAL UPGRADES PHASE 2

Project Summary

Phase 2 project consists of two distinct wharf upgrade objectives. New pile caps and steel piles for strengthening the Southern 560 lineal feet of the 700-foot wharf from 500 PSF to a 1,000 PSF live load capacity to support roll-on/roll-off (RO/RO) operations. Work also includes retrofit of the existing wharf structure to install new waterside and landside crane beams for the entire length of the wharf to support 100-foot-gauge rail-mounted container cranes. These upgrades require the installation of approximately 368 new piles, and also include repair of existing reinforced concrete pile caps below the wharf deck. Work includes installation of electrical duct banks, vaults, conduits, wiring, transformers and switch gear for the container cranes, as well as conduits for future mobile harbor cranes and vessel shore power. Work also includes installation of potable water services and stormwater pipes/treatment infrastructure, along with repaving of the entire wharf and upland areas and paint striping. Demolition of an existing 39,600 square foot building including hazardous material disposal, utility disconnecting and portable trailer relocation is an additive to the project. The project also includes milestone dates associated with other anticipated awarded projects.

Equipment and Systems Overview

- Medium Voltage Cables and Accessories
- Low Voltage Electrical Power Conductors and Cables
- Hangers and Supports
- Raceway, Boxes and Supports
- Seismic Controls
- Overcurrent Protective Device Coordination Study
- Secondary Unit Substations
- MV Transformers
- LV Dry Type Transformers
- Panelboards
- Cabinets and Enclosures
- Wiring Devices
- Enclosed Switches and Circuit Breakers
- Transient Voltage Surge Suppression System

Offeror Role

Subcontractor

Owner Information

Port of Everett
1205 Craftsman Way
Everett, WA 98201
Steve Hager, *Project Manager*
425.388.0633
steveh@portofeverett.com

Contract Amount & Type

\$ 1,654.693—Firm Fixed Price
MT-ST-2017-11

Customer Information

Advanced American Construction
8444 NW St. Helens Road
Portland, OR 97231
Jon Koller, *Project Manager*
503.445.9000
jkoller@advanced-american.com

Project Start and Finish Dates

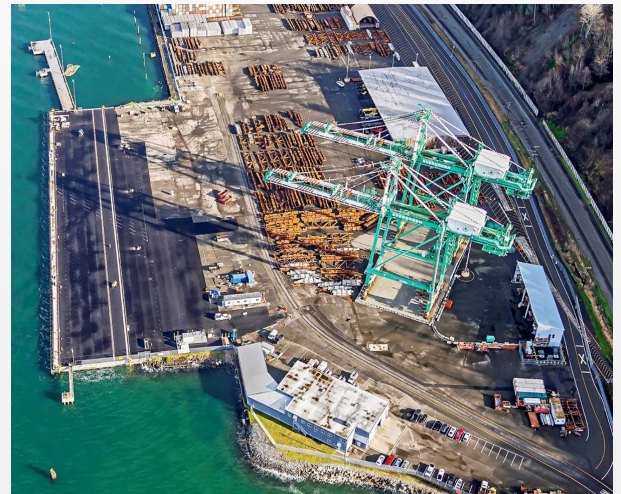
4/1/2019—12/1/2019

Project Location

Port of Everett South Terminal
1205 Craftsman Way
Everett, WA 98201

Burke Electric Scope

Electrical construction including upland electrical service equipment and distribution to the Wharf, Medium Voltage wharf substation/switchgear, 480V and 280/120V Electrical Distribution and Communication Systems, MV Container Crane Power Systems, MV Cold Ironing Conduits and Vaults, MV Mobile Harbor Crane Conduits and Vaults, Testing and Commissioning of Electrical Communication Systems, Electrical Duct bank crossing



Problems Encountered and Solutions Executed

During the course of this multi year project the purchase of the owner supplied CShip to shore gantry cranes was canceled. Causing the port to purchase used cranes which required them to be delivered to site and stored upland and refurbished prior to installation on the wharf(as seen in the picture). During the course of the project Burke was hired by the Port of Everett to perform (5) additional Work Order contracts ranging from \$30,000 to \$80,000 each. These work orders included tasks ranging from installation of a temporary medium voltage substation, Temporary Medium Voltage Connections to the Cranes, testing and troubleshooting of the cranes electrical system, and emergency repair work to the wharf caused by storm damage.

Burke Electric Project Personnel

Lee Barnsley, *General Foreman*
Scott Mosley, *Project Manager*
Dominic Burke, *COO*
Katie Morton, *Safety Manager*



13563 SE 27th PL Bellevue, WA 98005
425.644.0351 - www.burkeelectric.com