

GEORGE LANDON PUMP STATION NO.8 AND PUMP STATION NO. 9

Project Summary

George Landon Pump Station (PS8) facility, approximately 1,900 square feet (sf) of below-grade pump station with above-grade wood-framed building with asphalt shingle roofing that houses the electrical equipment. The pump station construction also includes, but is not limited to, the following: three (3) 250 HP split case centrifugal pumps, mechanical piping, HVAC, interior emergency generator, motor control center, control panel, and sound mitigation devices.

Pump Station No. 9 (PS9) facility, approximately 910 sf of CMU building with metal roofing pump station with 185 sf of below-grade pipe gallery. The pump station construction also includes, but is not limited to, the following: three (3) 125 HP split case centrifugal pumps, mechanical piping, HVAC, exterior emergency generator, motor control center, and control panel.

Equipment and Systems Overview

- Sensors and Controls
- Flow Meter Transmitters
- Fans, heaters, access gates
- Pump Motors
- Louvers and dampers
- Motor Control Centers and Panels
- Control Panels
- Instrumentation Panels
- Pump Control Panes
- Utility Meter Enclosure
- Surge Protective Devices
- Service Disconnect
- VFD's
- Harmonic Filters
- Distribution Transformers
- Branch Circuit Breakers
- Conduit and Fittings
- Outlet and Junction Boxes
- Handholes and Vaults
- Wire and Cable
- Switches and Receptacles
- Light Fixtures
- ATS
- Engine Generator

Offeror Role

Subcontractor

Owner Information

Highline Water District
23828 30th Avenue S,
Kent, WA 98032

Contract Amount & Type

\$1,212,000—Firm Fixed Price

Customer Information

McClure and Sons
15714 Country Club Drive
Mill Creek, WA 98012
Marc Thompson, *Project Manager*
206.491.7278

Project Start and Finish Dates

8/13/2020—12/24/2021

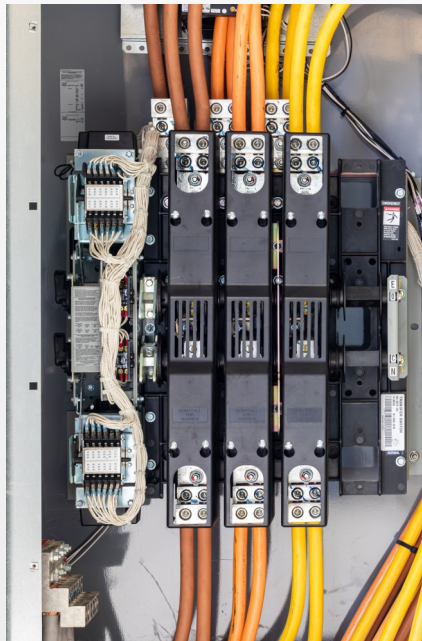
Project Location

Pump Station No. 9
21420 31st Ave S
SeaTac, WA 98198

Pump Station No. 8.
16032 42nd Ave S
Tukwila, WA 98188

Burke Electric Scope

Electrical Construction inside two pump stations including procurement and installation of the following: telemetry and Automatic controls, general electrical materials, site utilities, startup, testing and training, and equipment and systems listed at left.



Problems Encountered and Solutions Executed

Slab was poured ahead of schedule forcing all electrical to be surface mounted, layouts and installation required extra care and attention to details visually. Engineering supplied a larger generator than spec'd by over 1,000lbs. Burke and a subcontractor worked together to design a support system for the extra weight as well as oversized muffler which could not be suspended from the ceiling as originally designed.

Burke Electric Project Personnel

Ken Nash, General Foreman
Pete Kelly, Project Manager
Dominic Burke, COO
Katie Morton, Safety Manager



13563 SE 27th PL Bellevue, WA 98005
425.644.0351 - www.burkeelectric.com